

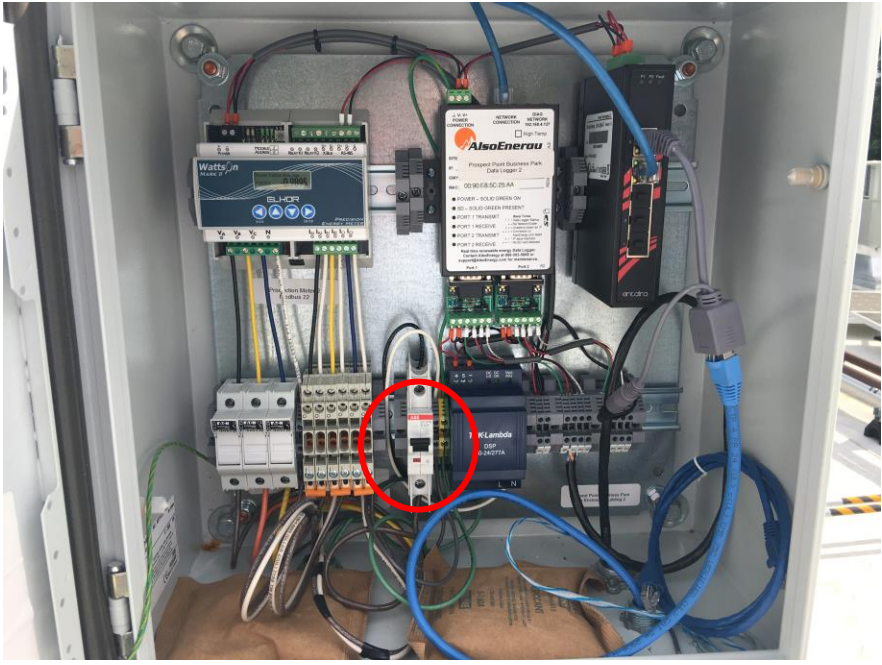


Moxa

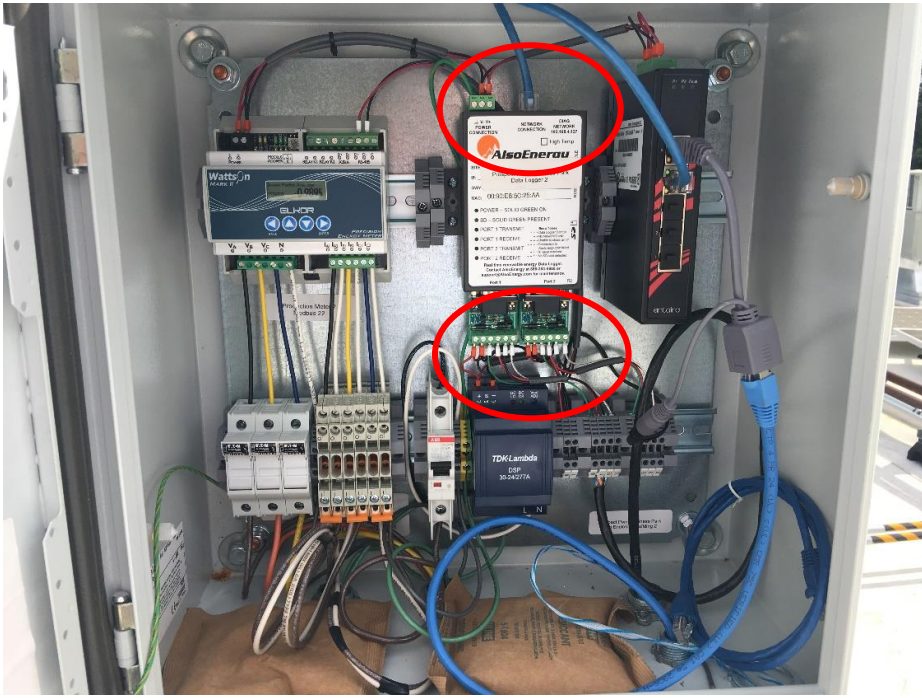
Power Logger 1000

Upgrade Instructions

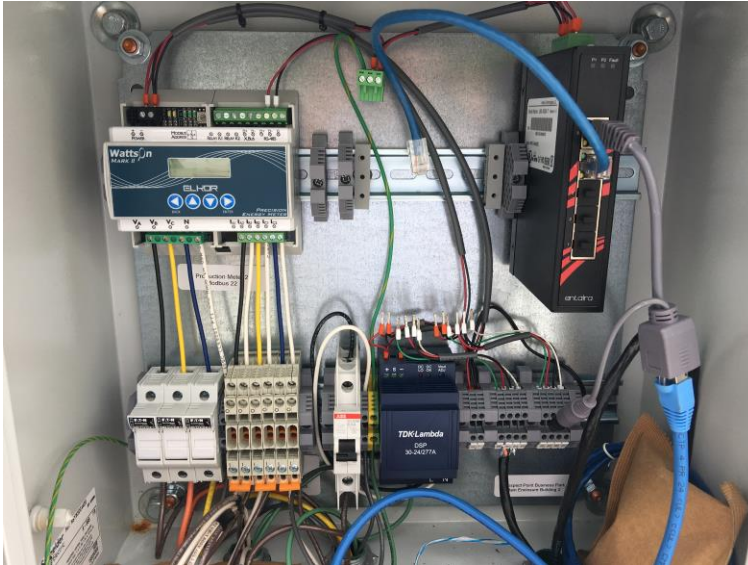
Following are instructions for upgrading a Moxa data logger to the new Power Logger 1000. Follow these steps for removing the old logger and mounting/wiring the new device in its place.



1. Remove power from the cabinet by either pulling the fuse from the main 24V fuse holder (if present) or in this case, turn off the main power circuit breaker in the cabinet as shown here.
2. Disconnect the green power connector, the Ethernet LAN cable and all of the wires from the serial port input cards at the bottom of the Moxa.



3. Remove the 4 screws holding the Moxa in place and remove the logger with its attached serial input cards.



4. Mount the new PL-1000 in place of the Moxa using 2 or 4 of the 4 screws that were used to hold the Moxa in place.

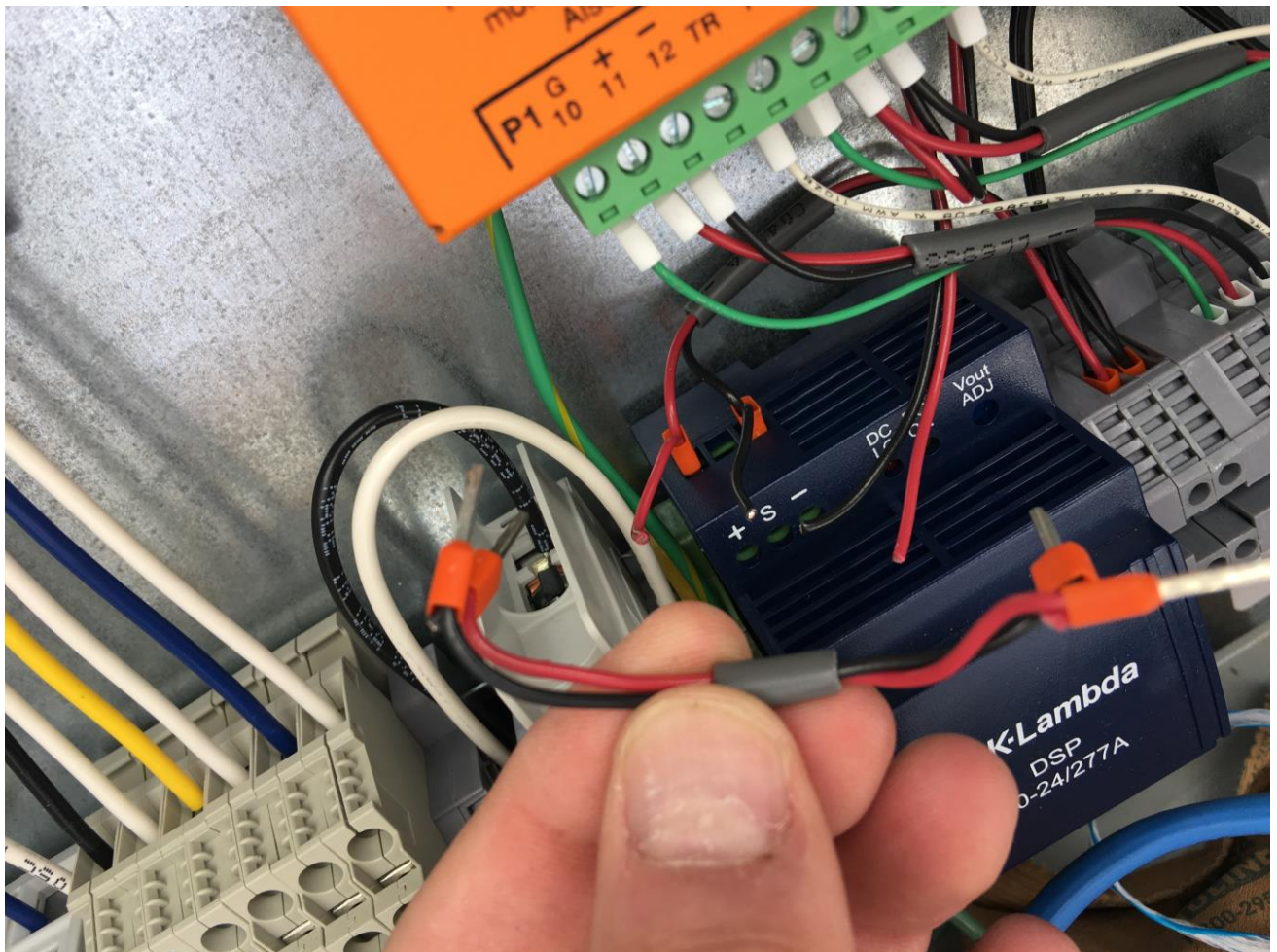
NOTE: you may need to mount the PL-1000 lower in the cabinet due to the length of the data cables that had previously connected to the serial port cards that are no longer present.



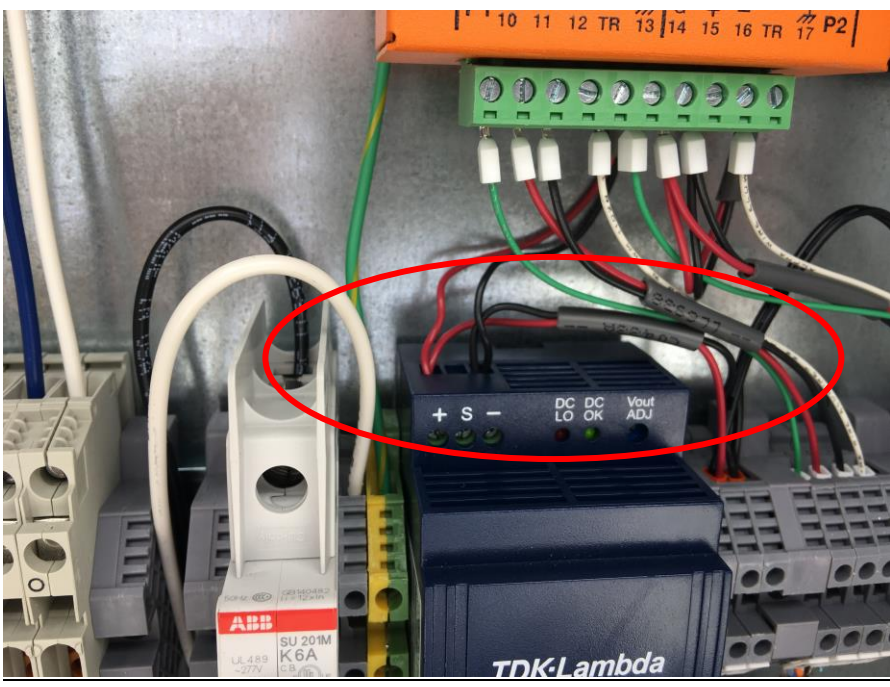
- 5. Connect the 24V power wires to the “VDC” connections observing correct polarity. Connect the green ground wire (if present) to the ground terminal of the RS-232 input port.
- 6. Connect the Ethernet cable to the LAN port.



7. Connect the Modbus data cables to their respective input ports (P1 & P2) at the bottom of the logger, again observing correct polarity and wire positions as shown. NOTE: The TR (Terminating Resistor) connector is only used if you are terminating the end of a Modbus chain at the logger – not a normal occurrence.
8. You should now have 2 pairs of unused 24V power wires that had previously powered the serial input cards of the removed Moxa. These wires are no longer necessary and should be removed. Depending on how the cabinet was originally wired, you will need to cut the jumper out of the circuit that went between the 2 serial port cards and reconnect the power without this jumper in place.



- 9. Cut the ferules off the wires, strip back about 3/8" of insulation from each of the 4 remaining black/red wires and reconnect them as shown below. How you go about this may differ from one cabinet to the next, but the principle is the same in all cases.



- 10. That's it! Once you have confirmed all of your connections are secure, Turn the cabinet power back on and contact AlsoEnergy support to have the logger ID number updated in PowerTrack.

